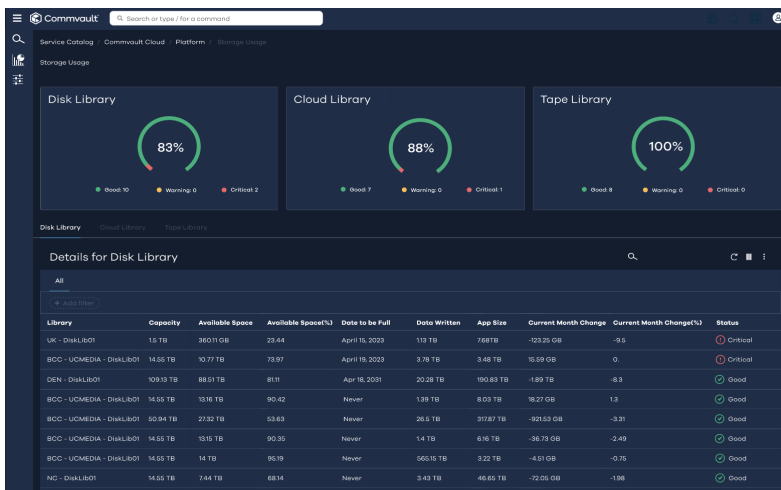


Unleash the Potential of Commvault® Cloud, Powered by Metallic® AI

# 5 Ways Commvault Is Changing the Game in Cyber Resilience

In today's rapidly evolving digital landscape, organizations must become cyber-resilient and prioritize operational excellence to safeguard their critical data assets. To address operational issues swiftly and effectively, while ensuring seamless day-to-day management and monitoring. Commvault Cloud, powered by Metallic AI, offers a comprehensive solution. In this discussion guide, we will explore five key ways in which our platform empowers organizations to become cyber resilient and maintain operational excellence.



## 1. UNIFIED DATA MANAGEMENT ACROSS HYBRID ENVIRONMENTS

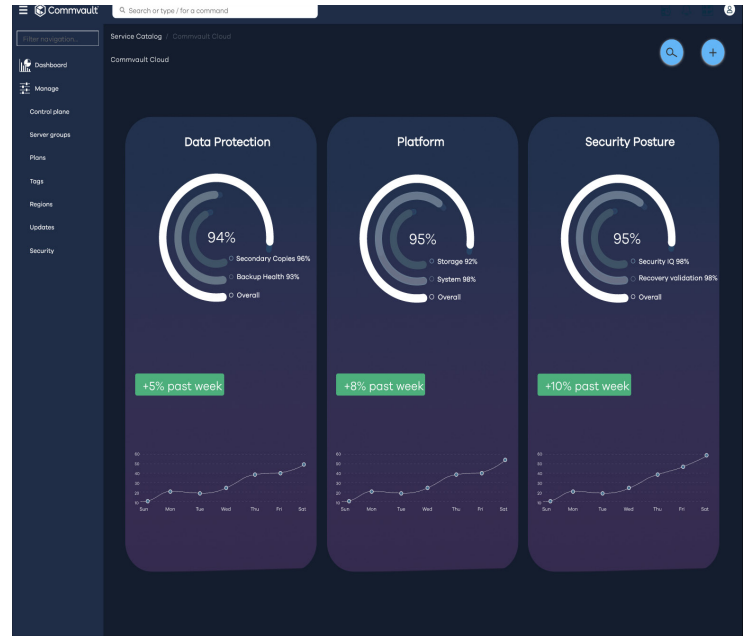
Commvault Cloud bridges the hybrid, complex data world, empowering organizations to effectively manage, protect, and leverage their data assets, regardless of where they reside. IT and Security Operations may seamlessly manage data across hybrid environments, including on-premises infrastructure, public clouds, and SaaS applications. It provides a centralized control plane for monitoring, orchestrating, and protecting data regardless of its location.

### Derive valuable insights from your data:

- **Unified Data Management:** Seamlessly manage data assets across hybrid environments, ensuring efficient data management regardless of location.
- **Intelligent Data Protection:** Incorporate intelligent features like automated backup and recovery, deduplication, and encryption to protect data and ensure business continuity.
- **Efficient Data Migration:** Simplify the process of data migration between different environments, ensuring data integrity and minimizing downtime.
- **Advanced Data Governance:** Implement data classification, retention policies, and compliance reporting to meet regulatory requirements and maintain data privacy and security.
- **Intelligent Analytics and Insights:** Gain valuable insights into data usage, storage optimization, and data lifecycle management, enabling informed decision-making for data storage and resource allocation.
- **Scalability and Flexibility:** Scale with the evolving needs of organizations, supporting data volume growth and adapting to changing infrastructure requirements.

## 2. THE ARCHITECTURAL ADVANTAGE FOR READINESS: BOOSTING OPERATIONS

Commvault Cloud’s architectural advantage lies in its innovative approach of separating the data plane from the control plane. Data does not flow through the control plane enhancing overall security. The data plane encompasses all the features and functionality of cyber resilience operations. It ensures that backup data flows can be optimized to secure and manage production data wherever it might reside—on-premises, public cloud, or private cloud. This decoupling of the data plane from the control plane, assures flexibility, and portability of data to be easily moved or migrated to different environments or storage locations without disrupting operations or requiring complex configurations while ensuring security every step of the way and maintaining a state of readiness.

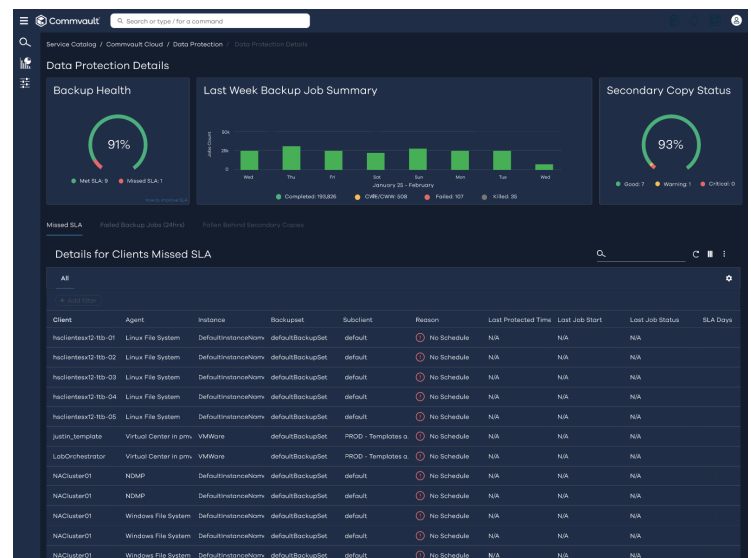


### Effortlessly adjust to changing data protection requirements:

- **Enhanced Scalability:** The separation of the data plane from the control plane allows for seamless scalability, enabling organizations to effortlessly handle growing data volumes and evolving business needs.
- **Flexibility:** Easily adapt to changing environments and technologies, ensuring organizations can easily integrate new systems and applications into their cyber-resilient data protection strategy.
- **Performance Optimization:** With the data plane and control plane operating independently, Commvault Cloud maximizes performance, enabling faster backup and recovery processes to meet stringent recovery time objectives (RTOs) and recovery point objectives (RPOs).

## 3. CYBER RESILIENCY WITH ARLIE

Commvault Cloud introduces Arlie, an AI-powered assistant that enhances cyber resiliency. Arlie leverages advanced analytics and machine learning algorithms to continuously monitor data and system behavior. Arlie helps IT and Security Operations proactively identify and mitigate cyber risks by detecting and responding to potential threats in real-time, ensuring data remains secure and protected. Gain a deeper understanding of your data and make better informed decisions and quickly meet SLAs.



**AI-enabled capabilities include:**

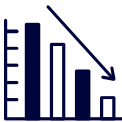
- **Active insights:** IT and Security operations gain real-time insights into operational failures – prioritizing what you care about most. This removes the need to sift through filters and reports to prioritize the most pressing information.
- **Code assist:** Simplify API code generation and workflows with our intuitive interface. Our platform offers a “no-code” approach to building integrations or coding actions. Simply describe what you want to achieve, and our code assistant will generate the necessary code instantly.
- **Root cause remediation:** Our advanced generative AI constantly monitors the performance of Commvault Cloud to identify issues, provide fixes, and offer real-time recommendations for optimizing cyber resilience.

## 4. ADVANCED THREAT DETECTION

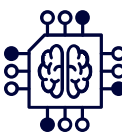
Commvault Cloud harnesses the power of Metallic AI to deliver advanced threat detection capabilities. By analyzing data patterns, system behavior, and network activities, Metallic AI swiftly identifies potential threats in real-time. This proactive approach empowers organizations to swiftly respond and effectively contain cyberattacks, ensuring minimal impact and uninterrupted operations.

**Key Benefits of Advanced Threat Detection:****Early Warning**

Gain insights into zero-day and silent threats, enabling proactive measures to be taken before data is compromised.

**Minimize Impact**

By swiftly identifying threats, Commvault Cloud helps minimize the blast radius and impact of attacks, reducing potential damage and disruption.

**Intelligent Threat Sensors**

Commvault Cloud employs intelligent threat sensors that mimic real resources, acting as decoys to lure bad actors. This exposes their attempts and provides valuable insights for further security enhancements.

## 5. CLEANROOMS FOR FRICTIONLESS RECOVERY

Commvault Cloud offers cleanrooms, a secure environment for testing cyber recovery plans without disrupting production systems. It enables organizations to recover data in a malware-free, network-segmented cloud environment. By continuously testing and recovering data in a controlled environment, Cleanroom Recovery ensures that you are better prepared to rapidly and reliably restore clean data when it matters most. Frequently validating data's readiness from backup is critical as it helps identify potential data corruption ahead of time while assisting with the development of a reliable and executable cyber-recovery runbook.



Cleanroom Recovery enhances cyber resilience, mitigates the risk of re-infection, strengthens security measures, simplifies failover processes, and maintains operational readiness. With Cleanroom Recovery, operations can benefit from comprehensive testing, forensic analysis capabilities, and seamless business continuity in the event of a breach.

#### Malware-free cloud environments with unique capabilities:

- **Secure Forensic Analysis:** Perform forensic analysis on infected systems to identify the root cause of cyberattacks. This empowers organizations to gain insights into attack vectors and implement appropriate security measures.
- **Accelerated Recovery Times:** Streamline the recovery process, enabling faster restoration from cyberattacks. Cleanroom Recovery facilitates efficient recovery, minimizing downtime and ensuring seamless business continuity.
- **Minimize Downtime:** Provide a failover solution for production systems, minimizing downtime and maintaining uninterrupted operations. Cleanroom Recovery enables organizations to swiftly resume normal activities in the face of cyber threats.

## EMPOWERING OPERATIONAL SUCCESS WITH COMMVAULT CLOUD CONSOLE

Commvault Cloud console is the ultimate solution for organizations looking to streamline their data management processes. By offering a centralized platform, it consolidates all data protection needs into one intuitive interface. With its comprehensive features, organizations can easily configure policies, monitor data protection activities, and gain real-time visibility into their data environment. This powerful tool empowers operational teams to excel in their daily operations while ensuring optimal cyber resilience. By leveraging Commvault Cloud console, organizations can confidently manage their data assets, drive operational success, and stay recovery ready at all times.

## EMBRACE THE POWER OF COMMVAULT CLOUD

Commvault Cloud, powered by Metallic AI, empowers organizations to achieve operational excellence and maintain cyber resilience in the face of evolving threats. By leveraging advanced threat detection, comprehensive data protection, intelligent analytics, and streamlined management through Commvault Cloud console, organizations can safeguard their critical data assets and ensure uninterrupted operations. Embrace the power of Commvault Cloud and embark on a journey towards operational excellence and cyber resilience.

To learn more, login to the [Cloud Command console](#) and visit here to [learn more](#).